

May 17, 2023

Keystones™ Colorbody™ Porcelain – Light Reflectance

This correspondence is in response to a request for Daltile Keystones product information relating to 2020 Florida Building Code, Section 454.1.2.4 Color. The specific requirement addressed is as follows:

The finish coating shall have a dry lightness level (CIE L value) of 80.0 or greater and a wet luminous reflectance value (CIE Y value) of 50.0 or greater, as determined by test results provided by the manufacturer, utilizing testing methodology from American Standard ASTM D4086, ASTM E1477, ASTM E1347.

The following information is in accordance with the most current, industry-recognized standard testing procedures and is offered in good faith as accurate and typical of normal production to the best of our knowledge. Due to the natural variation of raw materials and manufacturing processes, the buyer may experience some variation in test results and the characteristics of product actually purchased and/or otherwise installed. Buyer should evaluate suitability and safety of product for buyer's use since the conditions of use and maintenance are beyond our control. However, no guarantee or warranty of any kind, expressed or implied, is made with respect to the information contained herein.

Dal-Tile unglazed porcelain mosaics have an extremely low water absorption and do not exhibit a change in color when soaked in water. Assessment performed on a range of unglazed porcelain mosaic product colors found no difference between measurements of dry samples and measurements taken from samples soaked in water for more than 10 hours.

Dal-Tile offers product information based on the procedure defined in ASTM E1477 (for the acoustical ceiling tile industry) and the equivalent ASTM C609 (for the ceramic tile industry). The methodology of ASTM D4086 was reviewed. ASTM D4086 does not provide a method of measurement of CIE L value or CIE Y value. The methodology of ASTM D1347 was reviewed. ASTM D1347 provides an alternative method based on use of a tri-stimulus colorimeter instead of a spectrophotometer. Dal-Tile uses spectrophotometers for color and light reflectance measurement.

PROCEDURE: ASTM E1477 and ASTM C609
MACHINE TYPE: X-Rite Ci7800 Spectrophotometer
DESCRIPTION: CIE L and CIE Y values are derived from the spectral reflectance measurements of the product color target according to ASTM E1477 and ASTM C609, based on D65 illuminant and 10-degree observer.

illuminant-observer: D65-10

	CIE L (Dry)	CIE Y (Wet)	Munsell	LRV
D317 Biscuit	86.5	69.0	3.5Y 8.6/0.9	69%
D037 Pepper White	84.6	65.1	4.7Y 8.3/0.7	65%
D617 Arctic White	89.4	75.0	0.4GY 8.8/0.4	75%
D138 Golden Granite	86.8	69.6	1.9Y 8.6/1.0	70%
D335 Almond	82.2	60.7	2.0Y 8.1/1.4	61%
D160 Cornsilk	82.3	60.8	2.6Y 8.2/4.1	61%
D152 Mint Ice	80.2	57.0	6.5GY 7.9/1.3	57%

Commercial Field Tile Options-



Commercial Field Tile Requirements- Reference the first page. Per the DOH, the field tile shall have a dry lightness level (CIE L value), or 80.0 or greater and a wet luminous reflectant value (CIE Y value) of 50.0 or greater as determined by test results provided by the manufacture, utilizing testing methodology from American Standard ASTM D4086, ASTM E1477 OR ASTM E1347. Field tile must also have a non-slip DCOF of .42 or greater.

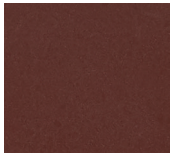
Choose a single color from the options above. Available in 1" x 1" or 2" x 2" mosaic tiles.



Above shown with 1" x 1" Field Tile in Arctic White and 1" x 1" Leading Edge in Black.

2" Vertical/Horizontal Leading Edge Tile Options:

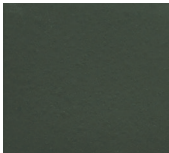
The 2" leading edges is to be contrasting, have a Munsell value less than 4, and a non-slip DCOF of .42 or greater. Choose a single color from the options below. Available in 2" x 2" mosaic tiles.



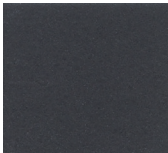
BROWNBERRY
(3) D118



CASTLEROCK
(3) D618



OAK MOSS (3)
D195



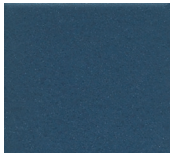
BLACK (3) D311



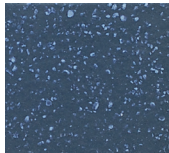
NAUTICAL
BLUE (4) D621



GALAXY (4) D023



NAVY (4) D189



NAVY SPECKLE
(4) D209



Above shown with 2" x 2" Field Tile in D617 Arctic White, 2" x 2" Leading Edge in D311 Black

Non Freezing climates only

MOSAICS

COLOR WHEEL™ COLLECTION – GLAZED CERAMIC

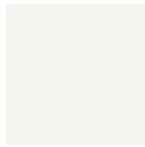
6" Waterline Options:

The 6" waterline is to be glossy for ease of cleaning. Available in 2" x 2" mosaic tiles. Waterline tile is only required for skimmer pools.

NON FREEZING CLMATES ONLY



BLACK
K111 (2)



ARCTIC WHITE
O190 (1)



BISCUIT
K175 (1)



URBAN PUTTY
O161 (2)



ARCHITECTURAL
GRAY O109 (2)



DESERT GRAY
X114 (1)



SUEDE GRAY
O182 (2)



CHALKBOARD
O180 (2)



MUSTARD
1012 (3)



ORANGE BURST
1097 (3)



CURRENT
SH17 (3)



EMERALD
O115 (3)



SEA BREEZE
1174 (3)



OCEAN BLUE
1049 (3)



NAVY
K189 (3)



PLUM CRAZY
1178 (3)

Standard Commercial Waterline Depth Markers:

Standard Commercial Deck Depth Markers:



Above shown with 2" x 2" Field Tile in D617 Arctic White, 2" x 2" Leading Edge in D023 Galaxy Blue, 2" x 2" Waterline in 1174 Sea Breeze, and Standard Commercial Waterline Depth Markers

Grout Option:

One Laticrete Grout Color Included

	#03 - Silk		#22 - Midnight Black		#30 - Sand Beige		#40 - Latte		#46 - Quarry Red
	#09 - Frosty (NEW)		#23 - Antique White		#34 - Sandstone		#42 - Platinum		#52 - Toasted Almond
	#17 - Marble Beige		#24 - Natural Grey		#35 - Mocha		#44 - Bright White		#53 - Twilight Blue
	#18 - Sauterne		#27 - Hemp		#39 - Mushroom		#45 - Raven		#56 - Desert Khaki
	#57 - Hot Cocoa		#61 - Parchment		#81 - Butter Cream		#89 - Smoke Grey		#94 - Walnut (NEW)
	#58 - Terra Cotta		#66 - Chestnut Brown		#85 - Almond		#90 - Light Pewter		#95 - Mink (NEW)
	#59 - Espresso		#67 - Autumn Green		#87 - Stormy Grey (NEW)		#91 - Slate Grey		#96 - Steamship (NEW)
	#60 - Dusty Grey		#78 - Sterling Silver		#88 - Silver Shadow		#93 - Fossil (NEW)		#97 - Iron (NEW)



LATAPOXY® 300 Adhesive

DS-633.0-0314

**Globally Proven
Construction Solutions**



1. PRODUCT NAME

LATAPOXY® 300 Adhesive

2. MANUFACTURER

LATICRETE International, Inc.
1 LATICRETE Park North
Bethany, CT 06524-3423 USA

Telephone: +1.203.393.0010, ext. 235
Toll Free: 1.800.243.4788, ext. 235
Fax: +1.203.393.1684
Internet: www.laticrete.com

3. PRODUCT DESCRIPTION

LATAPOXY 300 Adhesive is a chemical resistant, epoxy adhesive that will bond to most sound, clean surfaces. Adhesive spreads easily and cleans with water while fresh. LATAPOXY 300 Adhesive is a factory-proportioned kit consisting of epoxy resin, hardener and chemical resistant silica filler. LATAPOXY 300 Adhesive can be used in interior and exterior (see limitations) walls and floors, wet and dry areas.

Uses

For heavy duty commercial chemical resistant installations in food processing areas, commercial kitchens, restaurants, etc. Also use LATAPOXY 300 Adhesive to install all types of ceramic tile, marble and natural stone over post-tensioned and precast floor systems. Also recommended for rubber flooring and wood block floors, the installation of green marble, white marble, and resin backed tiles and stones agglomerate marbles that have a tendency to stain, darken or warp when installed with water-based installation materials.

Note: The Tile Council of North America recommends the use of epoxy adhesives and grouts for thin-set installations on suspended concrete slabs and for floors and walls when chemical resistance is required.

Advantages

- Water cleanable
- No flammable solvents are required to clean tools or finished work
- Ideal for installing moisture sensitive marble and agglomerate tiles
- Ideal for the installation of resin backed tile, mosaics, stone, and agglomerates
- Non-staining on white and light-colored marble
- High bond strength
- Maximum chemical resistance
- Conforms to EN 12004 and ISO 13007 with a R2 Classification

Suitable Substrates

- Concrete
- Ceramic tile and stones
- Exterior glue plywood*
- Concrete masonry
- Brick masonry
- Non-water soluble cut-back adhesive*
- Vinyl or other resilient tile*
- Cement mortar beds
- Gypsum wallboard*
- Cement plaster
- Cement terrazzo
- Plastic laminate*
- Cement backer board**
- Steel

* Interior application only.

**Consult cement backer board manufacturer for specific installation recommendations and to verify acceptability for exterior use.

Packaging

Unit Consists of the following components:

- 2 pouches of Part A total weight 2.1 lbs (1.0 kg)
- 2 pouches of Part B total weight 4.1 lbs (1.9 kg)
- 2 bags of Part C Powder total weight 18 lbs (8.2 kg)

Unit Size

#2 Unit

Weight: 25.2 lb (11.4 kg) volume: 1.8 gals (6.8 ℓ)

Approximate Coverage

	#2 Unit
With 1/16" (1.5 mm) v-notch trowel	180–200 sq. ft./16.7–18.6 m ²
With 3/16" (4 mm) v-notch trowel	70–80 sq. ft./6.5–7.4 m ²
With 1/8" x 1/8 (3 x 3 mm) square notch trowel	60–70 sq. ft./5.6–6.5 m ²
With 1/4" x 1/4 (6 x 6 mm) square notch trowel	30–35 sq. ft./2.8–3.3 m ²

Shelf Life

Factory sealed containers of this product are guaranteed to be of first quality for two (2) years***.

*** High humidity will reduce the shelf life of bagged product.

Limitations

- For veneer installations using this product, consult local building code requirements regarding limitations and installation system specifications.
- Not for use as a grout. Use SPECTRALOCK® PRO Premium Grout†, SPECTRALOCK PRO Grout†, LATAPOXY® SP-100 or SPECTRALOCK 2000 IG.
- Do not install when surface temperature is below 60°F (16°C) or above 90°F (32°C).
- Not for use as a wear surface.
- Adhesives for ceramic tile and stone are not replacements for waterproofing membranes. When a waterproofing membrane is required, use a LATICRETE® Waterproofing Membrane (see Section 10 FILING SYSTEMS).
- Consult LATICRETE Technical Services on limitations for exterior installations.

Note: Surfaces must be structurally sound, stable and rigid enough to support ceramic/stone tile, thin brick and similar finishes. Substrate deflection under all live, dead and impact loads, including concentrated loads, must not exceed L/360 for thin bed ceramic tile/brick installations or L/480 for thin bed stone installations where L=span length (except where local building codes specify more stringent deflection requirements)

Cautions

Consult MSDS for more safety information.

- During cold weather, protect finished work from traffic until fully cured.
- LATAPOXY 300 Adhesive Part A is corrosive until fully cured. Damage to eyes or skin is possible.
- Wait 14 days after the final grouting period before filling water features with water at 70°F (21°C).
- Contains silica sand. Silica sand may cause cancer or serious lung problems. Avoid breathing dust. Wear a respirator in dusty areas.
- Keep out of reach of children.

4. TECHNICAL DATA

VOC/LEED Product Information



This product has been certified for Low Chemical Emissions (ULCOM/GG UL2818) under the UL GREENGUARD Certification Program for Chemical Emissions for Building Materials, Finishes and Furnishings (UL 2818 Standard) by UL Environment.

Total VOC Content pounds/gallon (grams/liter) of product in unused form is 0.0067 lb/gal (0.80 g/l).

Applicable Standards

ANSI A118.3, EN 12004 and ISO 13007

Performance Properties



Test	Method	Specification	Results
Quarry Tile Shear Bond Strength	ANSI A118.3-5.5	>1000 psi (6.9 MPa)	>1000 psi (6.9 MPa)
Tensile Strength	ANSI A118.3-5.7	>1000 psi (6.9 MPa)	1000–1400 psi (6.9–9.6 MPa)
Compressive Strength	ANSI A118.3-5.6	>3500 psi (24.1 MPa)	5000–5400 psi (34.4–37.2 MPa)
Thermal Shock Resistance	ANSI A118.3-5.8	>500 psi (3.4 MPa)	600–700 psi (4.1–4.8 MPa)
Shrinkage	ANSI A118.3-5.3	<0.25%	0–0.1%
Sag Resistance	ANSI A118.3-5.4	No shape change	Pass
Water Cleanability	ANSI A118.3-5.1	>80 minutes	>80 minutes
Shear Adhesion Strength	ISO 13007-2 4.3.4	≥2 N/mm ²	≥2 N/mm ²
Shear Adhesion Strength after Water Immersion	ISO 13007-2 4.3.5	≥2 N/mm ²	≥2 N/mm ²
Shear Adhesion After Thermal Shock	ISO 13007-2 4.3.8	≥2 N/mm ²	≥2 N/mm ²
Open Time: Tensile Adhesion Strength	ISO 13007-2 4.1	>0.5 N/mm ² in not less than 20 minutes	>0.5 N/mm ² in not less than 20 minutes

Data from TCA054–05, TCA 095–90, and 50/0776/05.

Specifications subject to change without notification. Results shown are typical but reflect test procedures used. Actual field performance will depend on installation methods and site conditions.

Classification in Compliance with EN 12004

LATAPOXY® 300 Epoxy Adhesive is an improved reaction resin adhesive classified as R2. LATAPOXY 300 Epoxy Adhesive is CE marked, as declared in report no. 50/0776/05 issued by Materialprüfungs-und Versuchsanstalt Neuwied Forschungsinstitut für Vulkanische Baustoffe GmbH (Neuwied, Germany)

Working Properties (70°F [21°C])

Pot Life	45 minutes
Time to Grout	12 hours
Time to Light Traffic	12 hours
Time to Heavy Traffic	24 hours
Minimum Application Layer	1/8 in (3 mm)
Maximum Application Layer	3/8 in (9 mm)
Wet Density	99 lbs/ft ³ (1590 kg/m ³)

CHEMICAL RESISTANCE CHART

LATAPOXY® 300 Adhesive

REAGENT TYPE at (70°F [21°C])	LATAPOXY® 300 Adhesive EXPOSURE LEVEL	
	Intermittent	Constant
Citric Acid 10%	R	R
Sulfuric Acid 10%	R	R
Hydrochloric Acid 10%	R	R
Lactic Acid 5%	R	R
Vinegar	R	NR
Acetic Acid 10%	R	NR
Nitric Acid 10%	R	R
Sodium Hydroxide 10%	R	R
Sodium Chloride 10%	R	R
Concentrated Detergents	R	R
Ammonium Hydroxide	R	R
Sugars	R	R
Gasoline	R	R
Cooking Oils	R	R
Turpentine	R	R
Mineral Spirits	R	R
Toluene	NR	NR
Xylene	NR	NR

R= Recommended NR= Not Recommended

Chemical Resistance determined in accordance with ASTM C267-1982.

NOTES TO SPECIFIER: Use the constant exposure recommendations for intermittent exposure to reagents at temperatures above 90°F (32°C).

5. INSTALLATION

Surface Preparation

All surfaces should be between 60°F (16°C) and 90°F (32°C) and structurally sound, clean and free of all dirt, oil, grease, paint, concrete sealers or curing compounds. Rough or uneven concrete surfaces should be made smooth with Latex Portland Cement Underlayment to provide a wood float (or better) finish. Installation may be made on a damp surface. New concrete slabs must be damp cured and 28 days old prior to application. All slabs must be plumb and true to within 1/4" (6 mm) in 10 ft (3 m). Expansion joints shall be provided through the tile work from all construction or expansion joints in the substrate. Follow ANSI specification A108.01-3.7 "Requirements for Movement Joints: Preparations by Other Trades" or TCNA detail EJ-171 "Movement Joints—Vertical & Horizontal". Do not cover expansion joints with mortar.

Note: Temperature will effect working properties of LATAPOXY 300 Adhesive. Warm temperatures will speed curing and shorten working time. Cool temperatures will slow curing and require longer time to traffic. Store LATAPOXY 300 Adhesive at 70°F (21°C) for 24 hours prior to use.

1. Installer must verify that deflection under all live, dead and impact loads of interior plywood floors does not exceed industry standards of L/360 for ceramic tile and brick or L/480 for stone installations where L=span length.

2. Minimum construction for interior plywood floors.

SUBFLOOR: 5/8" (15 mm) thick exterior glue plywood, either plain with all sheet edges blocked or tongue and groove, over bridged joints spaced 16" (400 mm) o.c. maximum; fasten plywood 6" (150 mm) o.c. along sheet ends and 8" (200 mm) o.c. along intermediate supports with 8d ring-shank, coated or hot dip galvanized nails (or screws); allow 1/8" (3 mm) between sheet ends and 1/4" (6 mm) between sheets edges; all sheet ends must be supported by a framing member; glue sheets to joints with construction adhesive.

UNDERLAYMENT: 5/8" (15 mm) thick exterior glue plywood fastened 6" (150 mm) o.c. along sheet ends and 8" (200 mm) o.c. in the panel field (both directions) with 8d ring-shank, coated or hot dip galvanized nails (or screws); allow 1/8" (3 mm) to 1/4" (6 mm) between sheets and 1/4" (6 mm) between sheet edges and any abutting surfaces; offset underlayment joints from joints in subfloor and stagger joints between sheet ends; glue underlayment to subfloor with construction adhesive. Refer to Technical Data Sheet 152 "Bonding Ceramic Tile Stone or Brick Over Wood Floors" for complete details.

3. DO NOT bond to particle board, OSB, luan, Masonite® or hardwood surfaces.

Mixing

Pour LATAPOXY 300 Adhesive Part A and Part B into a clean mixing pail and mix thoroughly. Add LATAPOXY 300 Part C Filler Powder and mix to a smooth, trowelable consistency. Mortar is ready for use immediately after mixing.

Application

Apply mortar to the substrate with the flat side of the trowel, pressing firmly to work into surface. Comb on additional mortar with the notched side.

Note: Use the proper sized notched trowel to ensure full bedding of the tile. Back butter large tiles > 8" x 8" (>200 mm x 200 mm) to provide full bedding and firm support. Place tiles into wet, sticky mortar and beat in using a beating block and rubber mallet to embed tile and adjust level. Check mortar for complete coverage by periodically removing a tile and inspecting bedding mortar transfer onto back of tile.

6. AVAILABILITY AND COST

Availability

LATICRETE® and LATAPOXY materials are available worldwide.

For Distributor Information, Call:

Toll Free: 1.800.243.4788

Telephone: +1.203.393.0010

For on-line Distributor information, visit LATICRETE at www.laticrete.com.

Cost

Contact a LATICRETE Distributor in your area.

7. WARRANTY

See 10. Filing System

DS 230.13: LATICRETE® Product Warranty (United States and Canada)

A component of:

DS 230.99: LATICRETE Lifetime Tile & Stone System Warranty (United States and Canada)

DS 230.12HC: LATICRETE Home Center 10 Year System Warranty

DS 700.12HC: LATICRETE Home Center Lifetime System Warranty

8. MAINTENANCE

LATICRETE and LATAPOXY® grouts require routine cleaning with a neutral pH soap and water. All other LATICRETE and LATAPOXY materials require no maintenance but installation performance and durability may depend on properly maintaining products supplied by other manufacturers.

9. TECHNICAL SERVICES

Technical Assistance

Information is available by calling the LATICRETE Technical Service Hotline:

Toll Free: 1.800.243.4788, ext. 235

Telephone: +1.203.393.0010, ext. 235

Fax: +1.203.393.1948

Technical and Safety Literature

To acquire technical and safety literature, please visit our website at www.laticrete.com.

10. FILING SYSTEM

Additional product information is available on our website at

www.laticrete.com. The following is a list of related documents:

DS 230.13: LATICRETE Product Warranty (United States and Canada)

DS 230.99: LATICRETE Lifetime System Warranty (United States and Canada)

DS 230.12HC: LATICRETE Home Center 10 Year System Warranty

DS 700.12HC: LATICRETE Home Center Lifetime System Warranty

DS 030.0: SPECTRALOCK® 2000 IG

DS 236.0: 9235 Waterproofing Membrane

DS 631.0: LATAPOXY SP-100

DS 663.0: HYDRO BAN®

DS 681.0: SPECTRALOCK PRO Premium Grout†

DS 685.0: SPECTRALOCK PRO Grout†

† United States Invention Patent No.: 6881768 (and other Patents)

LATICRETE International, Inc.
One LATICRETE Park North, Bethany, CT 06524-3423 USA • 1.800.243.4788 • +1.203.393.0010 • www.laticrete.com

©2014 LATICRETE International, Inc.
All trademarks shown are the intellectual properties of their respective owners.



LATAPOXY® SP-100

DS-637.0-0414

**Globally Proven
Construction Solutions**



1. PRODUCT NAME

LATAPOXY® SP-100

2. MANUFACTURER

LATICRETE International,
Inc. 1 LATICRETE Park North
Bethany CT 06524-3423

Telephone: +1.203.393.0010, ext. 235
Toll Free: 1.800.243.4788, ext. 235
Fax: +1.203.393.1684
Internet: www.laticrete.com

3. PRODUCT DESCRIPTION

LATAPOXY SP-100 is a stainless, color-fast epoxy grout specifically designed for use in floor and wall applications of ceramic tile, stone and structural glazed block. Ideal for residential kitchens, bathrooms, foyers, as well as cafeterias, swimming pools, spas, restrooms and schools. Interior and exterior use.

Uses-COMMERCIAL

- Cafeterias
- Swimming pools
- Restrooms
- Schools

Advantages

- Sag Resistant-will not sag when used in wide joints up to 1/2" (12 mm).
- Easy to Apply-smooth and creamy.
- Uniform Color-resists blotching.
- Chemical Resistant-100% solids epoxy resists many acids, alkalis and corrosives.
- Durable-will not peel, crack or powder.

- Easy Maintenance-smooth texture, easier to clean than cementitious grout joints.
- Easy to Use-no noxious odor, nonflammable, water cleanable, even with textured tile.
- High Temperatures Resistance-withstands steam and industrial machine cleaning (up to 230°F/110°C).
- Conforms to EN 13888 and ISO 13007 with RG Classification
- Can be used as an adhesive for paper face mounted glass mosaic tiles.

Packaging Components:

#1 Unit Pail-80 pails per pallet

#4 Unit Carton-available in components only, 70 cartons per pallet

Shelf Life

Factory sealed containers of this product are guaranteed to be of first quality for two (2) years if stored at temperatures >32°F (0°C) and <110°F (43°C).

Limitations

- Suitable for exterior application in swimming pools. Light colors may darken slightly from direct UV exposure. Consult with LATICRETE Technical Services for specific exterior recommendations.
- Epoxy grout can only be used with Type 904L (N08904) and Type 304 (S30400) stainless steel. Lower grades are susceptible to corrosion and cracking.
- Not for use in areas subjected to harsh chemicals, or areas exposed to aggressive cleaning regimens. Not for use for floors and base in veterinary clinics, kennels or in applications exposed to high concentrations of food and mineral acids or areas exposed to high temperatures.
- Please consult with technical services for specific recommendations, if grout will be exposed to chemicals other than those indicated on the chemical resistant chart.
- Maximum stain resistance is achieved 10 days after installation at 70°F (21°C). Protect from exposure to acids and strong cleaners during this period.
- Not recommended for soft, polished marble or delicate glazed tiles.
- Adhesives/mastics, mortars and grouts for ceramic tile, pavers, brick and stone are not replacements for waterproofing membranes. When a waterproofing membrane is required, use HYDRO BAN® (see Section 10 FILING SYSTEMS).

Cautions

Consult MSDS for more safety information.

- During cold weather, protect finished work from traffic until fully cured.
- In steam rooms or submerged applications, allow LATAPOXY® SP-100 to cure for 10 days at 70°F (21°C) prior to use of area and filing with water. See TDS 192 for more information on these applications.
- Until cured, LATAPOXY SP-100 may irritate eyes and skin. Avoid contact with eyes and or prolonged contact with skin. In case of contact, flush thoroughly with water.
- Contains silica sand. May irritate eyes and skin. Avoid contact with eyes or prolonged contact with skin. In case of contact, flush thoroughly with water.
- Do not take internally. Silica sand may cause cancer or serious lung problems. Avoid breathing dust. Wear a respirator in dusty areas.
- Because propane gas heaters will cause epoxy grouts to yellow, refrain from using such heaters or properly vent all exhaust.
- Keep out of reach of children.

4. TECHNICAL DATA

Applicable Standard

Meets ANSI A118.3, EN 13888 and ISO13007 with RG Classification

Physical Properties

Test	Results
Water Cleanability	Pass (>80 min)
Water Absorption	<1/2%
Initial Setting Time	Pass (>2 hours)
Service Setting Time	Pass (<7 days)
Shrinkage	Pass (0.10%)
Sag	Pass (no change)
Quarry Shear Bonds	>1100 lbs/in ² (7.6 MPa)
Compressive Strength	>6000 lbs/in ² (41.4 MPa)
Tensile Strength	>1700 lbs/in ² (11.7 MPa)
Thermal Shock	>1200 lbs/in ² (8.3 MPa)

TCA-092-92

Test	Test Method	ISO 13007-3 RG Specification	Results
28 Day Cure Abrasion Resistance	ISO 13007-4 4.4	Less than or equal to 250 mm ³ (0.015 in ³)	133–141 mm ³ (0.008–0.0086 in ³)
28 Day Cure Flexural Strength	ISO 13007-4 4.1.3	Greater than 30 MPa (4350 psi)	34.9–40.3 MPa (5060–5844 psi)
28 Day Cure Compressive Strength	ISO 13007-4 4.1.4	Greater than 45 MPa (6525 psi)	62.4–64.0 MPa (9048–9285 psi)
28 Day Cure Shrinkage	ISO 13007-4 4.3	Less than 1.5 mm/m (0.06 in./3.28 ft)	0.99–1.05 mm/m (0.039–0.04 in/3.28 ft)
28 Day Water Absorption Soaked 240 minutes	ISO 13007-4 4.2	Less than 0.1 g (0.0002 lb)	0 g

Working Properties

Workability (Pot Life) @ 72°F (22°C)	1 hour
Foot Traffic	24 hours
Heavy Traffic	72 hours

Specifications subject to change without notification. Results shown are typical but reflect test procedures used. Actual field performance will depend on installation methods and site conditions.

CHEMICAL RESISTANCE* CHART

Chemical Name	Splash Exposure	Intermittent Exposure	Continuous Exposure
Milk	R	R	R
Wine	R	R	R
Ethanol	R	R	NR (Soft)
Potassium Permanganate 1%	R	R	R
Tannic Acid to 50%	R	R	R
Tartaric Acid to 50%	R	R	R
Phosphoric Acid to 80%	R	R	R
Sulfuric Acid to 20%	R	R	R
Oxalic Acid to 10%	R	R	R
Lactic Acid to 5%	R	R	R
Acetic Acid to 5%	R	R	R
Sodium Hydroxide to 50%	R	R	R
Sodium Hydroxide Saturated	R	R	R
Benzoic Acid 5%	R	R	R
Distilled Water	R	R	R
Mineral Water	R	R	R
Sea Water	R	R	R
Fruit Juice	R	R	R
Methanol	R	NR	NR
Mek	R	NR	NR
Chloroform	R	NR	NR
Methylene Chloride	NR	NR	NR
Toluene	R	NR	NR
Xylene	R	NR	NR

* Chemical Resistance depends on exposure levels: Splash-minor spill wiped up quickly such as in a laboratory. Intermittent-exposure to chemicals where clean up takes place several times a day such as in a commercial kitchen. Continuous-heavy exposure to chemicals where clean up is less frequent such as in an industrial food plant. R=Recommended, NR=Not Recommended. Chemical Resistance determined in accordance with ASTM C267-1982.

NOTES TO SPECIFIER: Use the constant exposure recommendations for intermittent exposure to reagents at temperatures above 90°F (32°C).

5. INSTALLATION

Preparation

Before starting to grout, remove debris in grout joints and lightly sponge the tile surface to remove dust and dirt. Do not clean tiles with acid cleaners. Substrate temperature must be between 60°F (16°C) and 90°F (32°C). See DS 631.5 for more information prior to use.

Mixing

Empty entire contents of LATAPOXY® SP-100 Part “A” and Part “B” pouches into a clean mixing pail. Mix with a margin trowel or a slow speed drill mixer until liquids are completely blended. Use all of LATAPOXY SP-100 Part “C” Filler Powder and mix to a uniform consistency (High temperatures may require more powder). Mix as stiff as possible to work into the joints. For easier workability or narrow joints, use 10% less powder.

Application

Immediately pour entire contents of bucket onto working area. Use a plastic sheet as a drop-cloth. Use standard epoxy grouting techniques to work LATAPOXY SP-100 into grout joints. Be sure all grout joints are packed full. Remove as much excess material as possible before initial cleaning with grout float. Do not leave excess grout on the face of tiles.

Cleaning

Initial Cleaning: Apply water to surface during cleanup with spray bottle or pressurized sprayer. Clean with nylon scrub pad and clean, cool water. Dress joints and final rinse with sponge.

Final Cleaning: Clean surface after 6-8 hours but within 24 hours of initial cleaning with neutral detergent, rinse with clean water.

6. AVAILABILITY AND COST

Availability

LATICRETE® and LATAPOXY materials are available worldwide.

For Distributor Information:

Toll Free: 1.800.243.4788
Telephone: +1.203.393.0010
Internet: www.laticrete.com

Cost

Contact a LATICRETE LATAPOXY Distributor in your area.

7. WARRANTY

See 10. FILING SYSTEM:

DS 230.13: LATICRETE Product Warranty (United States and Canada)

8. MAINTENANCE

LATICRETE and LATAPOXY grouts require routine cleaning with a neutral pH soap and water. Contact the cleaner manufacturer if another cleaner type will be used to ensure compatibility with the grout. Installation performance and durability may depend on properly maintaining products supplied by other manufacturers. Routine maintenance can be done with detergents and a sponge or mop. For tough or difficult to remove soil, a bleaching cleaner (e.g. Soft Scrub, Comet, Ajax, etc. or electric dish washing detergent) on a nylon scrubbing pad or a long handled stiff bristle brush can be used. Please note: Prior to using any cleaning material on a tile, etc. installation, test a discrete area or scrap piece of tile to insure desired results. For additional information, please refer to the LATICRETE Grout Guide, TDS 400.

9. TECHNICAL SERVICES

Technical Assistance

Information is available by calling the LATICRETE Technical Service Hotline:

Toll Free: 1.800.243.4788, ext. 235
Telephone: +1.203.393.0010, ext. 235
Fax: +1.203.393.1948

Technical and Safety Literature

To acquire technical and safety literature, please visit our website at www.laticrete.com.

10. FILING SYSTEM

Additional product information is available on our website at www.laticrete.com. The following is a list of related documents:

DS 230.13: LATICRETE Product Warranty (United States and Canada)
DS 030.0: SPECTRALOCK® 2000 IG
DS 663.0: HYDRO BAN®
DS 631.5: “How To Install” LATAPOXY Adhesives and Grouts
TDS 400: Grout Guide

LATICRETE International, Inc.
One LATICRETE Park North, Bethany, CT 06524-3423 USA • 1.800.243.4788 • +1.203.393.0010 • www.laticrete.com

©2014 LATICRETE International, Inc.
All trademarks shown are the intellectual properties of their respective owners.